



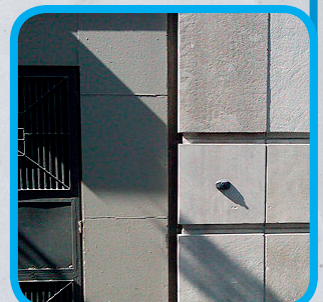
Guggenheim Museum New York, USA

Case Study

Emseal Colorseal is on Permanent Exhibition at this Landmark Museum following a hugely successful 28-year 'run' at the Guggenheim in New York City. Twenty-four years ago Emseal Colorseal system was installed between a neighbouring building and the 10-story Guggenheim museum office extension completed in 1992; it is clearly still as resilient and watertight as the day it was put in.

Where's the Emseal Colorseal? - The joint is between the limestone-faced building extension on the left of Frank Lloyd Wright's iconic original and the darker neighbouring brick building to its left. For most designers expansion joints are a necessary evil – and 'Evil' for their disruption of design aesthetics – although when cleverly positioned, as in this case returned and rebated slightly back from the building face, the joint becomes a part of the shadow line. From just 2-3m away the joint remains essentially a shadow-line although it was colour matched with the limestone facade as seen when viewed from close-up.

The Emseal Colorseal is fully intact and securely non-invasively bonded to both sides of the joint. The material is resilient and responsive, the stored energy of pre-compression remains very evident and there are no signs that the material is degraded joints, as well as Emseal's Seismic Colorseal for wall joints.



Client:

Solomon R. Guggenheim
Foundation

Architects & Engineers:

Thelwell Gwathmey Siegal Kaufman
(concept by Wright in 1951)

Main Products Used:

Emseal Colorseal

For More Information:

NCC Movement Joints Ltd

01257 266696

technical@nccinaction.co.uk

NCCmovementjoints.co.uk